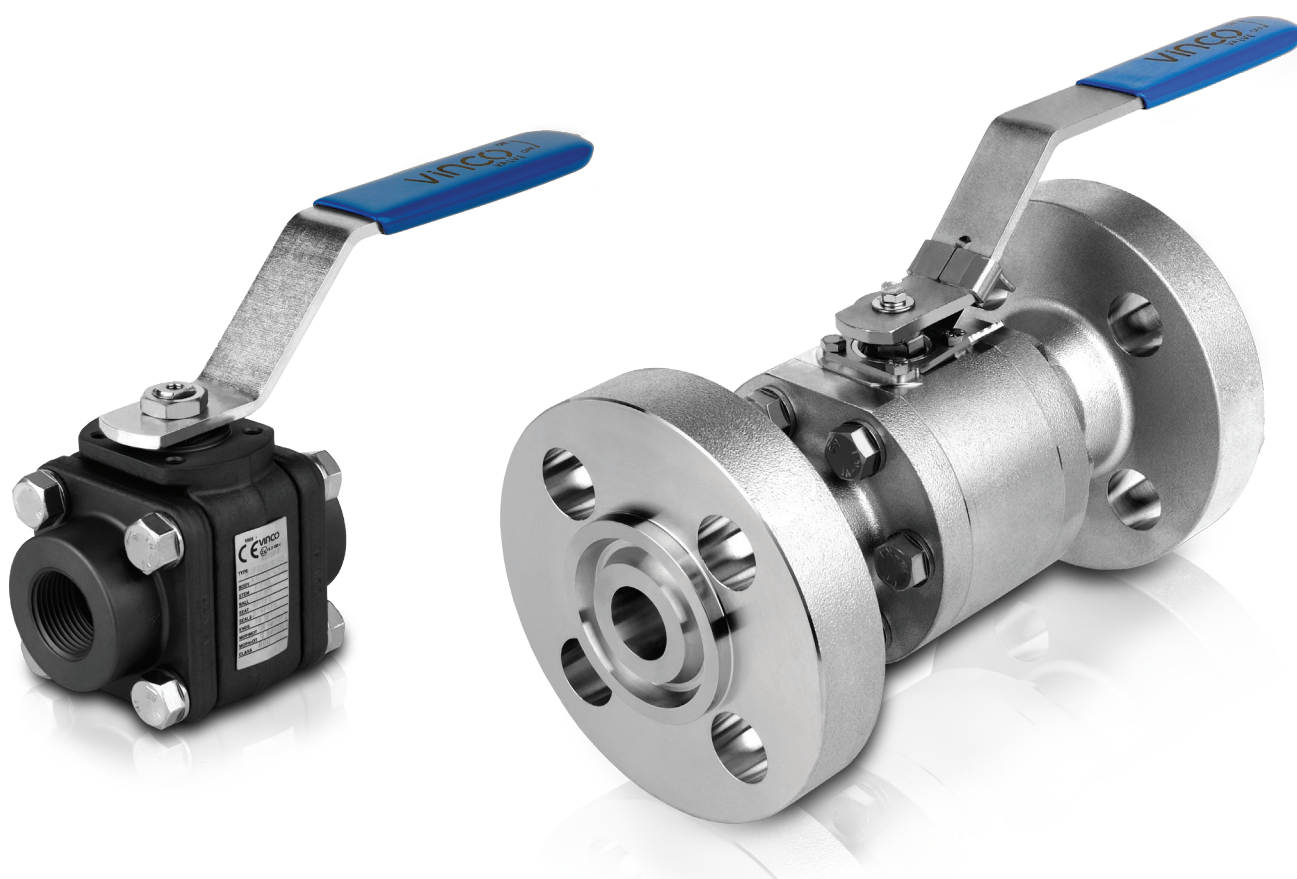




INDUSTRIAL RANGE

FIRE-SAFE RANGE

OIL & GAS • PETROCHEMICAL • CHEMICAL • REFINING • MARINE



Fugitive Emissions
ISO 15848



CE Marking
PED 97/23/EC



ATEX II 2 GD
94/9/EC




Fire Safe
ISO 10497 and API 607 Ed.6



Vinco has been supplying some of the most demanding end customers for more than 15 years. Some examples:



All trademarks and registered trademarks are the property of their respective owners

CERTIFICATION	CONSTRUCTION STANDARDS	TEST STANDARDS
<p>CE Certification acc. to PED 97/23/EC</p> <p>ATEX II 2GD Certification acc. to 94/9/EC</p> <p>Company Quality System Certified acc. to ISO 9001</p> <p>Fugitive Emissions Class B acc. to ISO 15848 and TA-LUFT (VDI 2440:2000)</p> <p> (PED marker)</p>	<p>ASME B16.34</p> <p>ISO 17292</p> <p>API 6D / ISO 14313</p> <p>NBR 15827</p> <p>MSS-SP-25</p> <p>ISO 5211</p> <p>ISO 10497 / ISO API 607 Ed.6</p> <p>ISO 15848</p>	<p>All valves with <i>resilient seats</i>, are tested acc. to: EN 12266-1 Rate A and API 598 / ISO 5208.</p> <p>All valves with <i>metallic seats</i>, are tested acc. to: EN 12266-1 Rate A to D.</p> <p>All valves can be tested acc. to API 6D under request.</p> <p>TESTS APPLIED:</p> <ul style="list-style-type: none"> Hydrostatic and Pneumatic <p>For all valves is issued certificate as: EN 10204 type 3.1</p> <p>Certification acc. to EN 10204 type 3.2 is available on request.</p>

SF Series

3 Pieces Bolted - Floating

CI800 (2000 psi)
Full Bore: DN ¾" to 1½"
Reduced Bore: DN ½" to 2"

CI600 (1500 psi)
Full Bore: DN 2"
Reduced Bore: DN 2½"

CI300 (750 psi)
Full Bore: DN 2½" to 4"
Reduced Bore: DN 3" to 6"

CI150 (300 psi)
Full Bore: DN 6" to 8"
Reduced Bore: DN 8" to 10"

Body / Connections Material : CARBON ST. A350 LF2 ; A105N
STAINLESS ST. A182 F316-316L ; A182 F304-304L

Ball Material : A182 F316-316L ; A351 CF8M ; A182 F304-304L

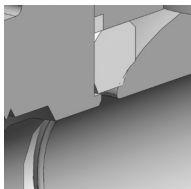
Stem Material : A182 F316-316L ; A182 F304-304L

Seat Material : CG-RPTFE, DEVLON, PEEK, PEEK Mod., Metal Seats

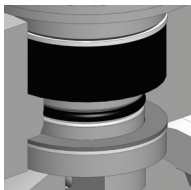
Options:

A350 LF3 ; A182 F321 (UNS S32100) ; A182 F44 (UNS S31254) ; Duplex A182 F51 (UNS S31803); Super Duplex A182 F55 (UNS S32760)

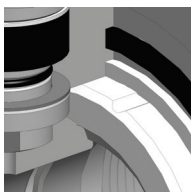
Other materials for Body / Connections, Ball, Stem and Seats on request



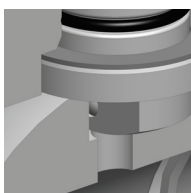
- Metal backup seat for sealing in the event of a fire



- Live loaded packing self adjust ensures longer service without maintenance
- Anti-blowout stem



- Encapsulated graphite body seals for extra resistance
- Pressure relieving seats for body cavity pressure relieving with valve closed position



- Electrical conductivity is ensured between body, ball and ends acc. ATEX (94/9/CE)
- Ball relief hole to equalize different pressures inside the body when the valve is open position



Connections:

- Threaded BSP/BSPP- BSPT- NPT Ends
- Buttweld and Buttweld Nipple (Sch.10 to XXS) Ends
- Socketweld and Socketweld Nipple Ends
- Flanged RF & RTJ Ends

Other Features:

- ISO 5211 mounting flange
- Actuation at 90° handle, handwheel or actuator. Lockable lever as option



HF Series

3 Pieces Bolted - Floating

Body / Connections Material : CARBON ST. A350 LF2
STAINLESS ST. A182 F316-316L ; A182 F304-304L

Ball Material : A182 F316-316L ; A182 F304-304L

Stem Material : 17-4 PH

Seat Material : DEVLON, PEEK, PEEK Mod., Metal Seats

Options:

A350 LF3 ; A182 F321 (UNS S32100) ; A182 F44 (UNS S31254) ; Duplex A182 F51 (UNS S31803); Super Duplex A182 F55 (UNS S32760)

Other materials for Body / Connections, Ball, Stem and Seats on request

CI1500 (3600 psi)

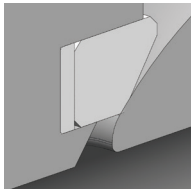
Full Bore: DN 3/8" to 3"

Reduced Bore: DN 1/2" to 4"

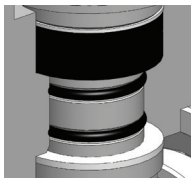
CI2500 (6000 psi)

Full Bore: DN 3/8" to 2"

Reduced Bore: DN 1/2" to 2 1/2"



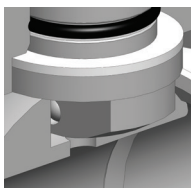
- Metal backup seat for sealing in the event of a fire



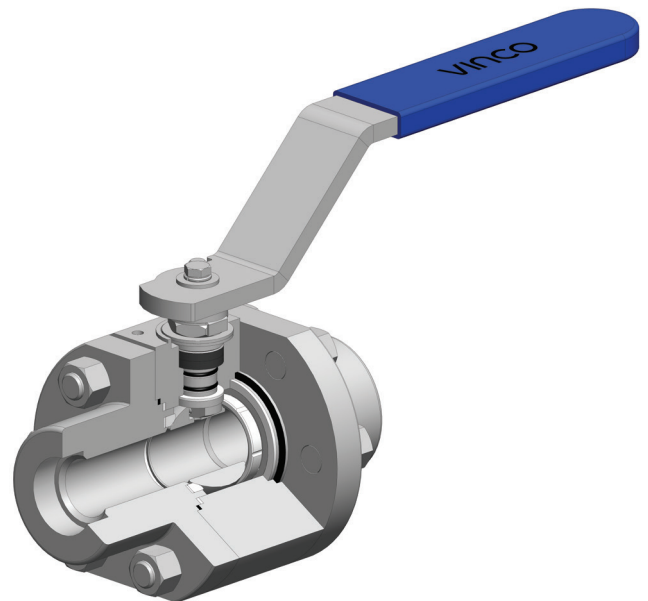
- Live loaded packing self adjust ensures longer service without maintenance
- Anti-blowout stem



- Encapsulated graphite body seals for extra resistance
- Pressure relieving seats for body cavity pressure relieving with valve closed position



- Electrical conductivity is ensured between body, ball and ends acc. ATEX (94/9/CE)
- Ball relief hole to equalize different pressures inside the body when the valve is open position

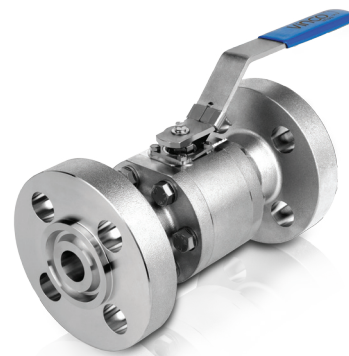


Connections:

- Threaded BSP/BSPP- BSPT- NPT Ends
- Buttweld and Buttweld Nipple (Sch.10 to XXS) Ends
- Socketweld and Socketweld Nipple Ends
- Flanged RF & RTJ Ends

Other Features:

- ISO 5211 mounting flange
- Actuation at 90° handle, handwheel or actuator. Lockable lever as option



Monobloc - Floating

GF Series

CI2500 (6000 psi)
Full Bore: DN ¾" to 2"
Reduced Bore: DN ½" to 2"

Body / Connections Material : CARBON ST. A350 LF2

STAINLESS ST. A182 F316-316L ; A182 F304-304L

Ball Material : A182 F316-316L ; A351 CF8M ; A182 F304-304L

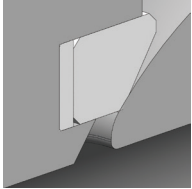
Stem Material : 17-4 PH

Seat Material: DEVLON, PEEK, PEEK Mod., Metal Seats

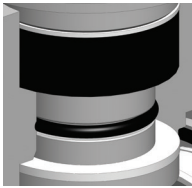
Options:

A350 LF3 ; A182 F321 (UNS S32100) ; A182 F44 (UNS S31254) ; Duplex A182 F51 (UNS S31803); Super Duplex A182 F55 (UNS S32760)

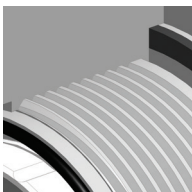
Other materials for Body / Connections, Ball, Stem and Seats on request



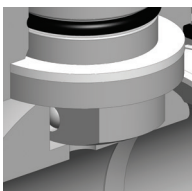
- Metal backup seat for sealing in the event of a fire



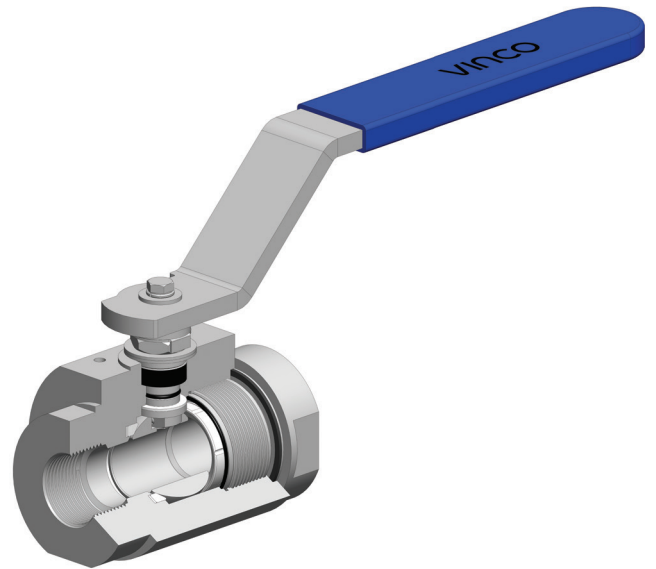
- Live loaded packing self adjust ensures longer service without maintenance
- Anti-blowout stem



- Encapsulated graphite body seals for extra resistance
- Pressure relieving seats for body cavity pressure relieving with valve closed position



- Electrical conductivity is ensured between body, ball and ends acc. ATEX (94/9/CE)
- Ball relief hole to equalize different pressures inside the body when the valve is open position



Connections:

- Only Threaded BSP/BSPP- BSPT- NPT Ends

Other Features:

- ISO 5211 mounting flange
- Actuation at 90° handle, handwheel or actuator. Lockable lever as option



BF Series

2 Split Body - Floating

Body / Connections Material : CARBON ST. A350 LF2
STAINLESS ST. A182 F316-316L ; A182 F304-304L

Ball Material : A182 F316-316L ; A351 CF8M ; A182 F304-304L

Stem Material : A182 F316-316L ; A182 F304-304L ; 17-4 PH

Seat Material : CG-RPTFE, DEVLON, PEEK, PEEK Mod., Metal Seats

Options:

A350 LF3 ; A182 F321 (UNS S32100) ; A182 F44 (UNS S31254) ; Duplex A182 F51 (UNS S31803); Super Duplex A182 F55 (UNS S32760)

Other materials for Body / Connections, Ball, Stem and Seats on request

Cl150 (300 psi) / PN16

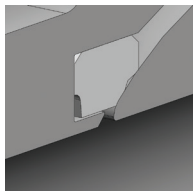
Full Bore: DN ½" to 6"
Reduced Bore: DN 2" to 8"

Cl300 (750 psi) / PN40

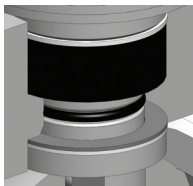
Full Bore: DN ½" to 6"
Reduced Bore: DN 2" to 8"

Cl600 (1500 psi) / PN100

Full Bore: DN ½" to 4"
Reduced Bore: DN 2" to 6"



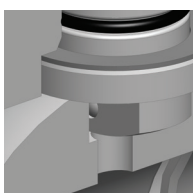
- Metal backup seat for sealing in the event of a fire



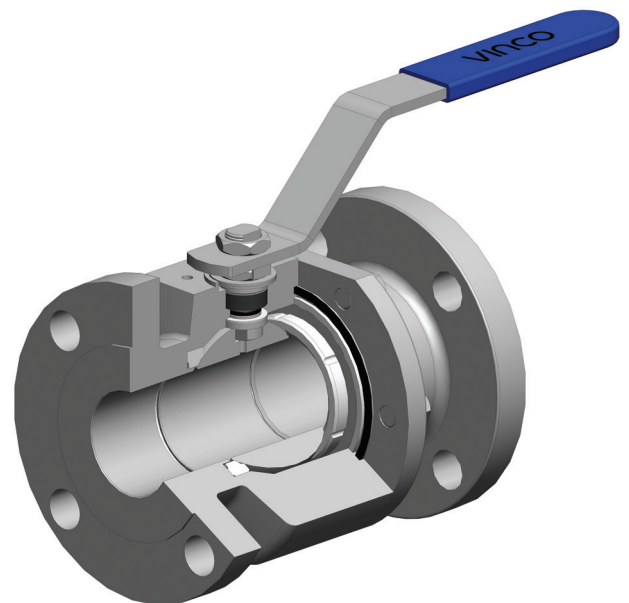
- Live loaded packing self adjust ensures longer service without maintenance
- Anti-blowout stem



- Encapsulated graphite body seals for extra resistance
- Pressure relieving seats for body cavity pressure relieving with valve closed position



- Electrical conductivity is ensured between body, ball and ends acc. ATEX (94/9/CE)
- Ball relief hole to equalize different pressures inside the body when the valve is open position



Connections:

- Flanged RF & RTJ Ends
- Flanged PN100 / PN40 / PN16 Ends

Other Features:

- ISO 5211 mounting flange
- Actuation at 90° handle, handwheel or actuator. Lockable lever as option

2 Split Body - Floating

CF Series

CI150 (300 psi)
Full Bore: DN 2", 3" and 4"

Body / Connections Material : CARBON ST. A216 WCB
STAINLESS ST. A351 CF8M ; A351 CF8

Ball Material : A351 CF8M

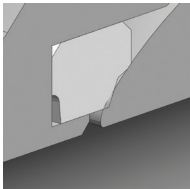
Stem Material : A182 F316-316L ; 17-4 PH

Seat Material: CG-RPTFE, PEEK, PEEK Mod., Metal Seats

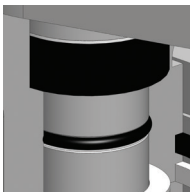
Options:

A352 LCC ; A352 LCB ; A216 WCC ; Duplex A182 F51 (UNS J92205) ;
Super Duplex A182 F55 (UNS J93380)

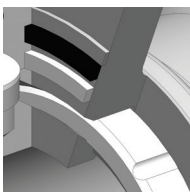
Other materials for Body / Connections, Ball, Stem and Seats on request



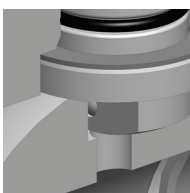
- Metal backup seat for sealing in the event of a fire



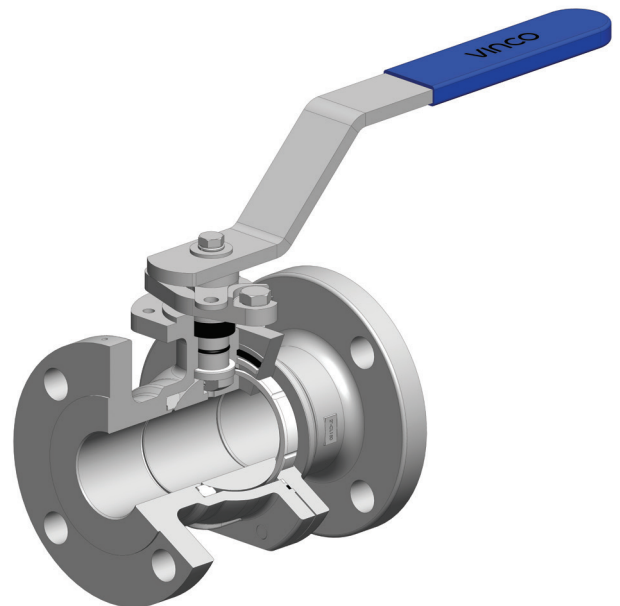
- Live loaded packing self adjust ensures longer service without maintenance
- Anti-blowout stem



- Encapsulated graphite body seals for extra resistance
- Pressure relieving seats for body cavity pressure relieving with valve closed position



- Electrical conductivity is ensured between body, ball and ends acc. ATEX (94/9/CE)
- Ball relief hole to equalize different pressures inside the body when the valve is open position

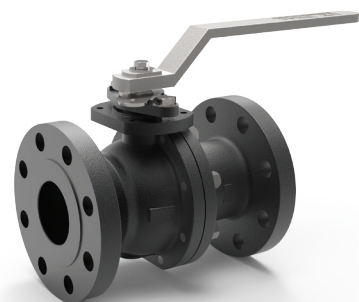


Connections:

- Flanged RF & RTJ Ends

Other Features:

- ISO 5211 mounting flange
- Actuation at 90° handle, handwheel or actuator. Lockable lever as option



ST Series

Multiways - Floating

Body / Connections Material : CARBON ST. A350 LF2
STAINLESS ST. A182 F316-316L ; A182 F304-304L

Ball Material : A182 F316-316L ; A182 F304-304L

Stem Material : A182 F316-316L ; A182 F304-304L ; 17-4 PH

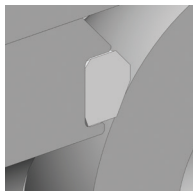
Seat Material : CG-RPTFE, DEVLON, PEEK, PEEK Mod.

Options:

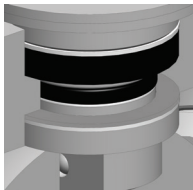
A350 LF3 ; A182 F321 (UNS S32100) ; A182 F44 (UNS S31254) ; Duplex A182 F51 (UNS S31803); Super Duplex A182 F55 (UNS S32760)

Other materials for Body / Connections, Ball, Stem and Seats on request

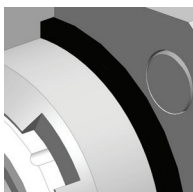
Cl600 (1500 psi)
Full Bore: DN 3/8" to 4"
Reduced Bore: DN 1/2" to 6"



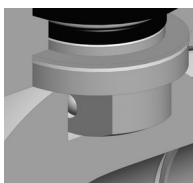
- Metal backup seat for sealing in the event of a fire



- Live loaded packing self adjust ensures longer service without maintenance
- Anti-blowout stem



- Encapsulated graphite body seals for extra resistance
- Pressure relieving seats for body cavity pressure relieving with valve closed position



- Electrical conductivity is ensured between body, ball and ends acc. ATEX (94/9/CE)
- Ball relief hole to equalize different pressures inside the body when the valve is open position

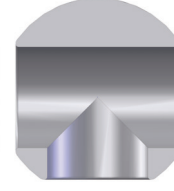


Port Configurations:

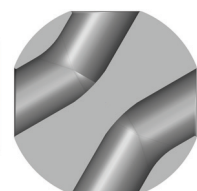
L - Port



T - Port



Double L - Port

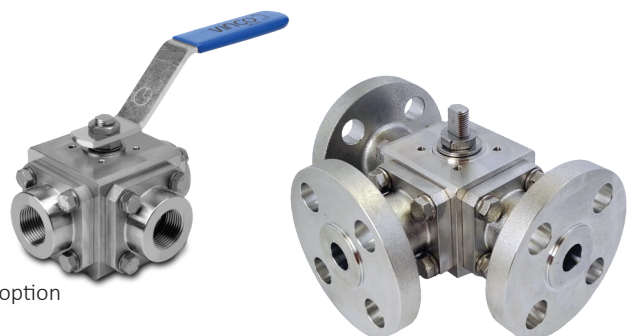


Connections:

- Threaded BSP/BSPP- BSPT- NPT Ends
- Socketweld Ends
- Flanged RF & RTJ Ends

Other Features:

- ISO 5211 mounting flange
- Actuation handle (90°/180°), handwheel or actuator. Lockable lever as option



Wafer Type - Floating

WF Series

PN100

Full Bore: DN 3" to 6"

PN160

Full Bore: DN ½" to 2½"

Body / Connections Material : CARBON ST. A350 LF2

STAINLESS ST. A351 CF8M ; A351 CF8

Ball Material : A351 CF8M

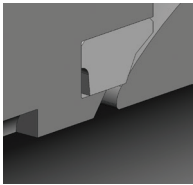
Stem Material : 17-4 PH

Seat Material: DELRIN, DEVLON

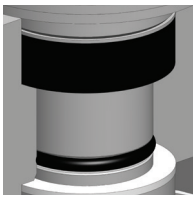
Options:

A182 F316-316L ; A182 F304-304L

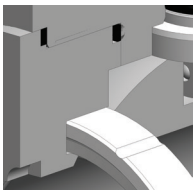
Other materials for Body / Connections, Ball, Stem and Seats on request



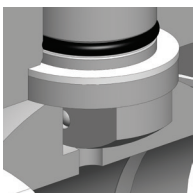
- Metal backup seat for sealing in the event of a fire



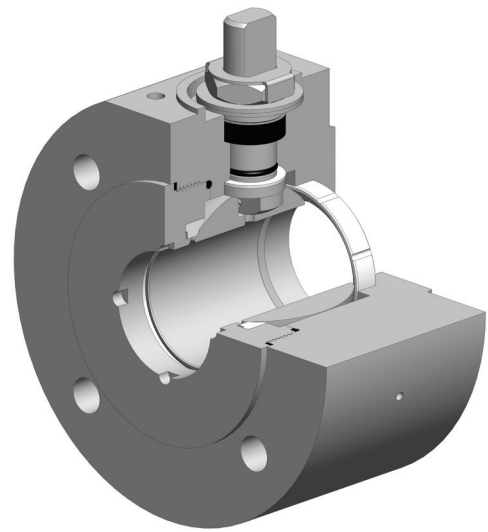
- Live loaded packing self adjust ensures longer service without maintenance
- Anti-blowout stem



- Encapsulated graphite body seals for extra resistance
- Pressure relieving seats for body cavity pressure relieving with valve closed position



- Electrical conductivity is ensured between body, ball and ends acc. ATEX (94/9/CE)
- Ball relief hole to equalize different pressures inside the body when the valve is open position

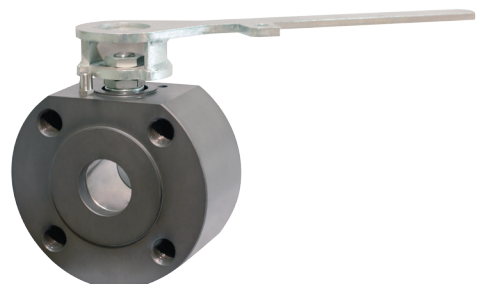


Connections:

- Flanged PN100 / PN160 Ends

Other Features:

- ISO 5211 mounting flange
- Actuation at 90° handle, handwheel or actuator



SD Series

3 Pieces Bolted - Floating

Body / Connections Material : CARBON ST. A350 LF2 ; A105N
STAINLESS ST. A182 F316-316L ; A182 F304-304L

Ball Material : A182 F316-316L ; A351 CF8M ; A182 F304-304L

Stem Material : A182 F316-316L ; A182 F304-304L

Seat Material : CG-RPTFE, DEVLON, PEEK, PEEK Mod., Metal Seats

Options:

A350 LF3 ; A182 F321 (UNS S32100) ; A182 F44 (UNS S31254) ; Duplex A182 F51 (UNS S31803); Super Duplex A182 F55 (UNS S32760)

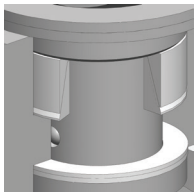
Other materials for Body / Connections, Ball, Stem and Seats on request

CI800 (2000 psi)
Full Bore: DN 3/8" to 1 1/2"
Reduced Bore: DN 1/2" to 2"

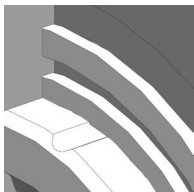
CI600 (1500 psi)
Full Bore: DN 2"
Reduced Bore: DN 2 1/2"

CI300 (750 psi)
Full Bore: DN 2 1/2" to 4"
Reduced Bore: DN 3" to 6"

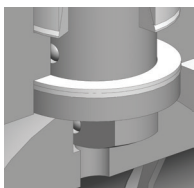
CI150 (300 psi)
Full Bore: DN 6" to 8"
Reduced Bore: DN 8" to 10"



- Live loaded "V" packing self adjust ensures longer service without maintenance
- Anti-blowout stem



- Encapsulated body seals for extra resistance
- Pressure relieving seats for body cavity pressure relieving with valve closed position



- Electrical conductivity is ensured between body, ball and ends acc. ATEX (94/9/CE)
- Ball relief hole to equalize different pressures inside the body when the valve is open position



Connections:

- Threaded BSP/BSPP- BSPT- NPT Ends
- Buttweld and Buttweld Nipple (Sch.10 to XXS) Ends
- Socketweld and Socketweld Nipple Ends
- Flanged RF & RTJ Ends

Other Features:

- ISO 5211 mounting flange
- Actuation at 90° handle, handwheel or actuator. Lockable lever as option



3 Pieces Bolted - Floating

VD Series

Cl300 (750 psi)

Full Bore: DN 3/8" to 2"
Reduced Bore: DN 1/2" to 2 1/2"

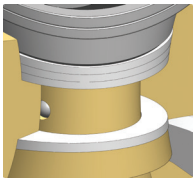
Body / Connections Material : BRONZE BS1400 LG4 (C93200)
BRONZE BS1400 AB2 (C95500)

Ball Material : BRONZE BS1400 LG4 (C93200) ; BRONZE BS1400 AB2 (C95500)
Stem Material : BRONZE BS1400 LG4 (C93200) ; BRONZE BS1400 AB2 (C95500)
Seat Material: PTFE, TFM 1600, CG-RPTFE

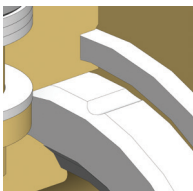
Options:

BRONZE C92410 ; BRONZE C95800

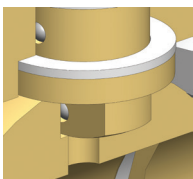
Other materials for Body / Connections, Ball, Stem and Seats on request



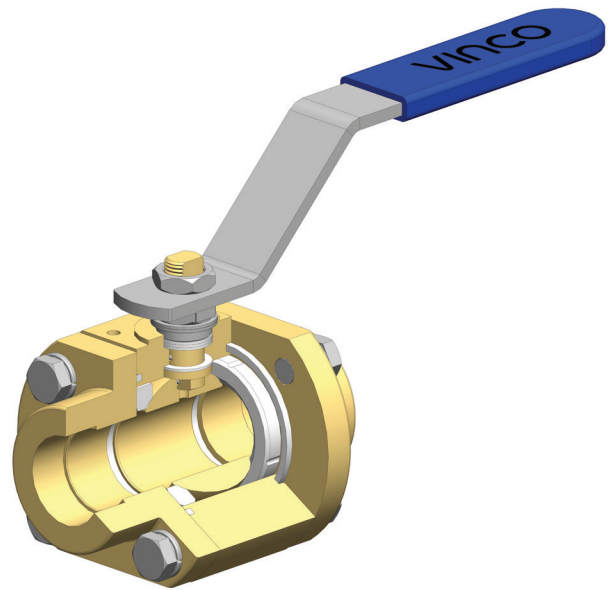
- Live loaded packing self adjust ensures longer service without maintenance
- Anti-blowout stem



- Encapsulated body seals for extra resistance
- Pressure relieving seats for body cavity pressure relieving with valve closed position



- Electrical conductivity is ensured between body, ball and ends acc. ATEX (94/9/CE)
- Ball relief hole to equalize different pressures inside the body when the valve is open position



Connections:

- Threaded BSP/BSPP- BSPT- NPT Ends
- Buttweld and Buttweld Nipple (Sch.10 to XXS) Ends
- Socketweld and Socketweld Nipple Ends
- Flanged RF & RTJ Ends

Other Features:

- ISO 5211 mounting flange
- Actuation at 90° handle, handwheel or actuator. Lockable lever as option



LD / LDR Series

3 Pieces Bolted - Floating

Body / Connections Material : STAINLESS ST. A351 CF3M
STAINLESS ST. A351 CF3M / A350 LF2
STAINLESS ST. A351 CF3M / A182 F316-316L

Ball Material : A351 CF8M ; A182 F316-316L

Stem Material : A182 F316-316L

Seat Material : PTFE, TFM 1600, CG-RPTFE

Options:
A351 CF3

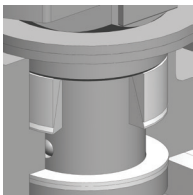
Other materials for Body / Connections, Ball, Stem and Seats on request

PN100
Full Bore: DN 3/8" to 3/4"
Reduced Bore: DN 1/2" to 1"

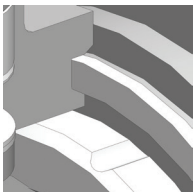
PN64
Full Bore: DN 1" to 2"
Reduced Bore: DN 1 1/4" to 2 1/2"



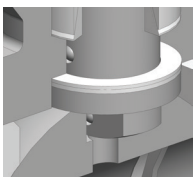
- Swivel ends allow the alignment of the body with the tubing during installation – Only LDR Series



- Live loaded "V" packing self adjust ensures longer service without maintenance
- Anti-blowout stem



- Encapsulated body seals for extra resistance
- Pressure relieving seats for body cavity pressure relieving with valve closed position



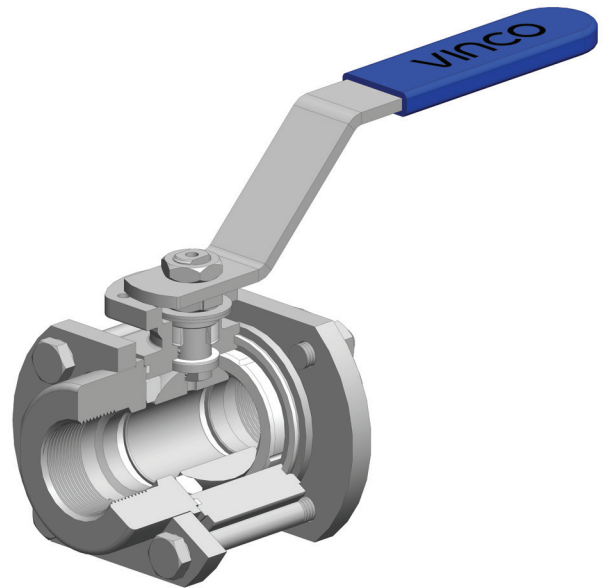
- Electrical conductivity is ensured between body, ball and ends acc. ATEX (94/9/CE)
- Ball relief hole to equalize different pressures inside the body when the valve is open position

Connections:

- Threaded BSP/BSPP- BSPT- NPT Ends
- Buttweld (Sch.10 to XXS) Ends
- Socketweld Ends

Other Features:

- ISO 5211 mounting flange
- Actuation at 90° handle, handwheel or actuator. Lockable lever as option



3 Pieces Bolted - Trunnion

VTR Series

CI150 (300 psi) to CI2500 (6000 psi)
Full Bore: DN ½" to 12"
Reduced Bore: DN ¾" to 12"

Body / Connections Material : CARBON ST. A350 LF2

STAINLESS ST. A182 F316-316L ; A182 F304-304L

Ball Material : A182 F316-316L ; A182 F304-304L

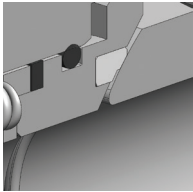
Stem Material : A182 F316-316L ; A182 F304-304L ; 17-4 PH

Seat Material: CG-RPTFE, DEVLON, PEEK, PEEK Mod., Metal Seats

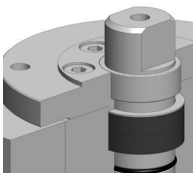
Options:

A350 LF3 ; A182 F321 (UNS S32100) ; A182 F44 (UNS S31254) ; Duplex A182 F51 (UNS S31803); Super Duplex A182 F55 (UNS S32760)

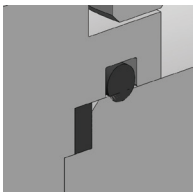
Other materials for Body / Connections, Ball, Stem and Seats on request



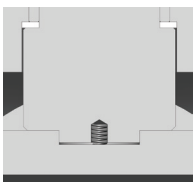
- Metal backup seat for sealing in the event of a fire



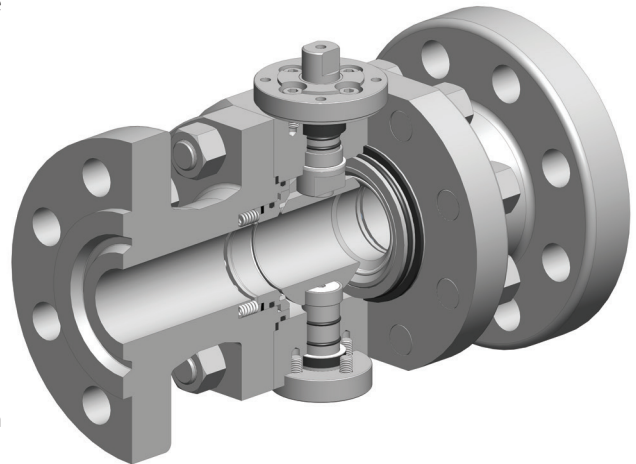
- Low emission packing
- ISO 5211 for automation



- Encapsulated graphite body seals for extra resistance



- Electrical conductivity is ensured between body, ball and ends acc. ATEX (94/9/CE)



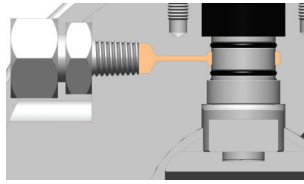
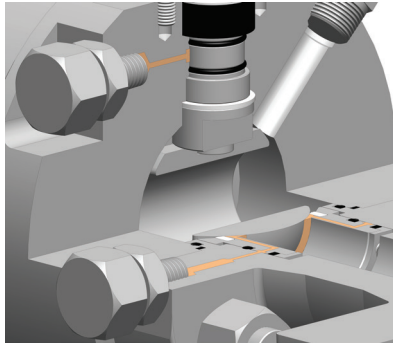
Connections:

- Butt weld Nipple (Sch.10 to XXS) and Socket weld Nipple Ends
- Flanged RF & RTJ Ends

Other Features:

- Actuators: Bare Shaft, Handle, Gear Box, Actuator
- Lifting and Supports
- Lip Seals

Emergency Injection

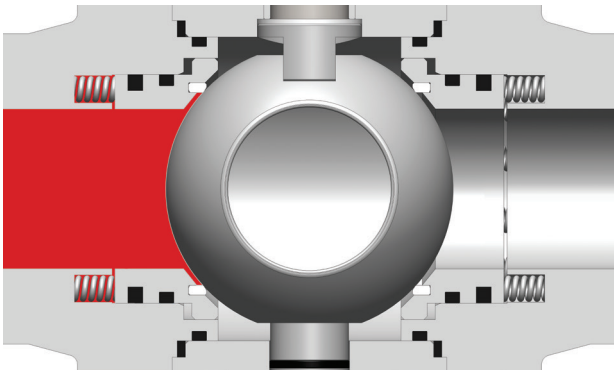


The emergency sealant injection system on the stem can be utilized in case of o'ring damage or if stem leakage occurs



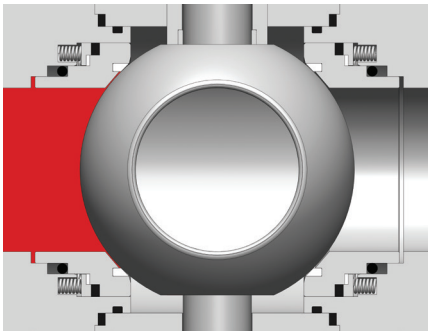
If a seat damaged you can inject sealant directly into the seat area through special fittings in the body and restore sealing integrity. A buried check valve is provided beneath each fitting

Single Piston Effect

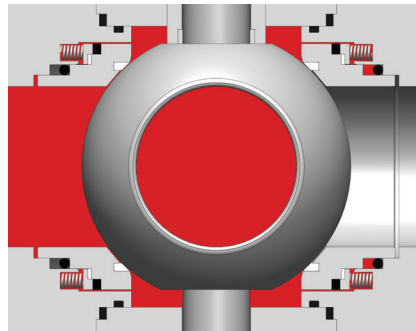


The sealing performed only in the first seal

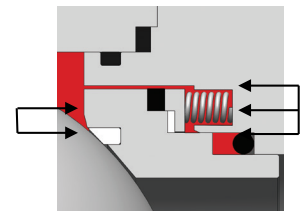
Double Piston Effect



The sealing is performed in both seats



The second seat (downstream) will seal as well



Type of Actuation

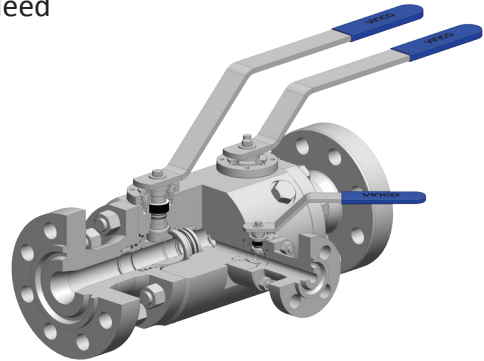
DN	CI150	CI300	CI600	CI900	CI1500	CI2500
10						
15						
20						
25						
32						
40						
50						
65						
80						
100						
125						
150						
200						
250						
300						
	Handle		Handle / Gear Box		Gear Box	

Double Block and Bleed

Double Block and Bleed Vinco valves are available in **Floating** and **Trunnion** versions.

Bleed Valve: Needle or Floating

These valves are design fire safe according to ISO 10497/API 607 Ed.6



Body/Ends Material:

A350 LF2, A182 F316-316L, A182 F304-304L, A182 F51 (UNS S31803), A182 F55 (UNS S32760)

Ball Material:

A182 F316-316L, A351 CF8M, A182 F304-304L, A182 F51 (UNS S31803), A182 F55 (UNS S32760)

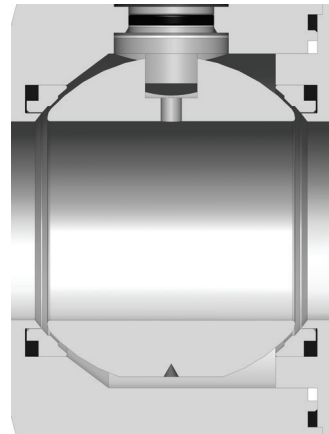
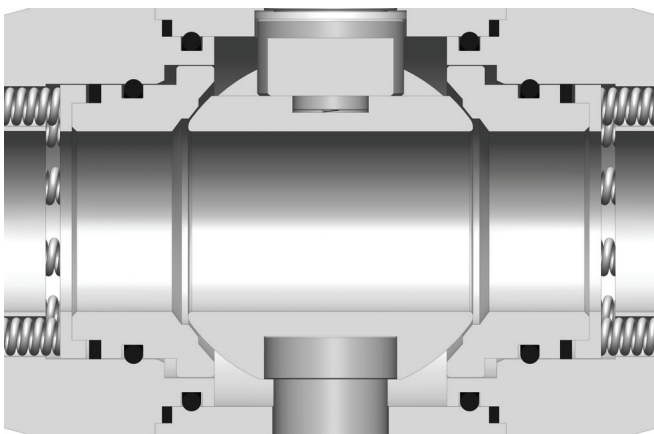
Stem Material:

A182 F316-316L ; A182 F304-304L ; 17-4 PH, A182 F51 (UNS S31803), A182 F55 (UNS S32760)

Seat Material:

CG-RPTFE, DEVLON, PEEK, PEEK Mod., Metal Seats

Metal Seats



Metal seats valves are designed for applications requiring resistance to erosion, abrasion, corrosion and high temperatures beyond the capabilities of the currently available polymeric seat materials.

Metal seat and ball are TCC coated (Tungsten Carbide Coating)



Rua do Progresso, lotes 15
4760-841 Vilarinho das Cambas
V.N. Famalicão - Portugal

Tel: +351 252 303 210
www.vincovalves.com
comercial@vincovalves.com