

A member of NEUMO Ehrenberg Group



# NEUMO ASEPTIC TECHNOLOGY

STAINLESS SOLUTIONS FOR LIFE

## DIN32676

Clamp Connections for Food processing,  
Chemical and Pharmaceutical Industry





---

# CONTENTS

|                                                           |           |
|-----------------------------------------------------------|-----------|
| <b>About NEUMO</b> .....                                  | <b>00</b> |
| Company Portrait .....                                    | 00.01     |
| <b>Clamp Connections DIN32676</b> .....                   | <b>08</b> |
| Introduction .....                                        | 08.01     |
| Clamp Ferrules .....                                      | 08.02     |
| Blind Ferrules .....                                      | 08.03     |
| Hose Tails .....                                          | 08.04     |
| Clamps .....                                              | 08.05     |
| Clamp Gaskets.....                                        | 08.06     |
| <b>Table of Materials</b> .....                           | <b>11</b> |
| Table of Materials (chem. analysis).....                  | 11.01     |
| <b>High-Performance Materials and Custom Design</b> ..... | <b>14</b> |
| Introduction .....                                        | 14.01     |
| High-Performance Materials and Custom Design .            | 14.02     |



[Catalogue Download \(PDF\)](#)

**Subject to technical modifications**

---



## Components, equipment and tubes - made of stainless steel and special alloys

NEUMO in Knittlingen was founded by Senator Henry J. Ehrenberg in 1947. The young enterprise quickly became a leading supplier of components for the food processing industry.

NEUMO is the parent company of an owner-managed group of companies with more than 1.900 employees. Today, NEUMO is the leader in technology regarding components, vessels, assemblies and apparatuses, made of stainless steel and special alloys for the fluid handling, used in the significant production processes of the pharmaceutical industry, biotechnology, chemical industry and semiconductor technology.

## NEUMO – Product Innovations for Tomorrow's Markets

When biosciences really started to take off in the 1970s and the triumph of biotechnology appeared to be inevitable, NEUMO made an important strategic decision: to shift its focus on aseptic technology. A successful move as it turned out, since today the majority of all biopharmaceuticals is made in plants

equipped with components, apparatuses and tubes supplied by the NEUMO Ehrenberg Group.

The production site in Knittlingen is specialised in the development and production of sterile applications, pooling its expertise in the fabrication of high-alloy stainless steels, corrosion resistant duplex steels and nickel-base alloys.

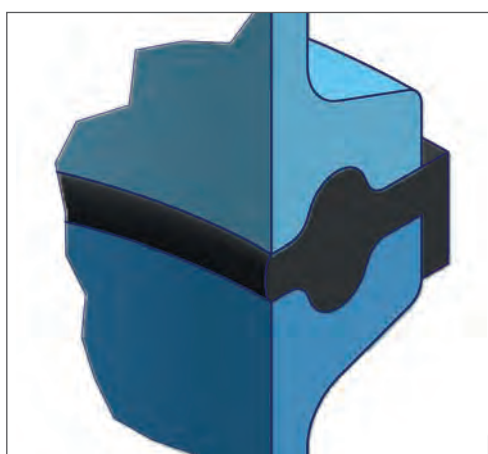
The product range includes special tubing grades, couplings, all kinds of fittings and equipment as well as fabrication to drawing. Furthermore, NEUMO is a significant OEM manufacturer of pharmaceutical vessels and fermenters and a major supplier of equipment such as aseptic heat exchangers.

NEUMO has taken over technological leadership with innovative and unique solutions such as elastomer-free coupling as well as the CleanLip technology. These innovations led for example to the aseptic couplings which have gone from strength to strength in red biotechnology, marketed under the brand names BioConnect®, ConnectS® and BioControl®.



# DIN32676

## Clamp Connections for Food processing, Chemical and Pharmaceutical Industry



### Hygienic Classes DIN32676

| Hygienic class  |                  | Surface qualities   |                     |
|-----------------|------------------|---------------------|---------------------|
|                 |                  | Ra internal surface | Ra external surface |
| H1              | HE1 <sup>b</sup> | <1,60µm             | <3,20µm             |
| H2              | HE2 <sup>b</sup> |                     | -                   |
| H3 <sup>a</sup> | HE3 <sup>b</sup> | <0,80µm             | <1,60µm             |
| H4              | HE4 <sup>b</sup> | <0,40µm             | <0,80µm             |
| H5              | HE5 <sup>b</sup> | <0,25µm             | <0,80µm             |

a Standard hygienic class

b Electropolished with a removal of at least 20µm



Type KK

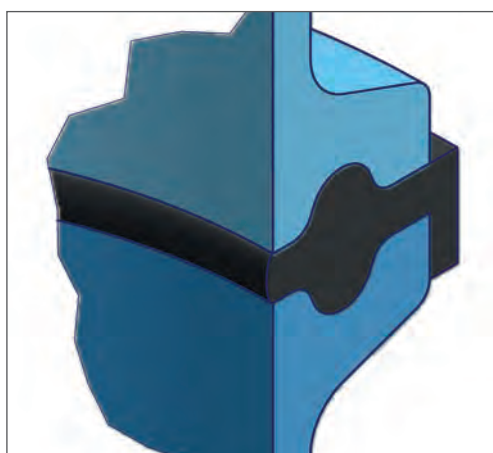
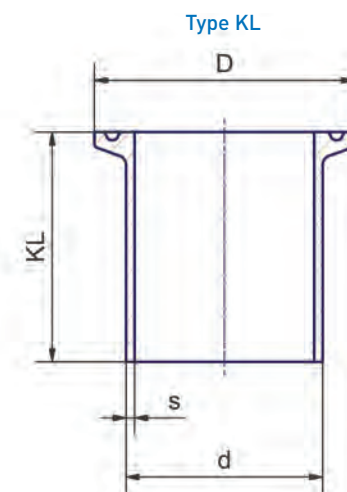
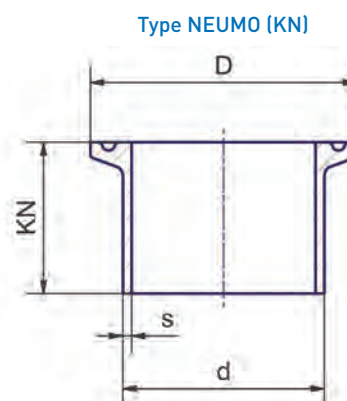
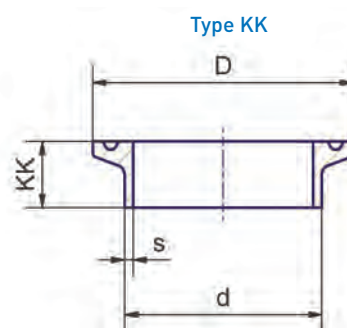


Type NEUMO (KN)



Type KL

| Technical Data                                                                                                                                                                               |                                                                                                              |
|----------------------------------------------------------------------------------------------------------------------------------------------------------------------------------------------|--------------------------------------------------------------------------------------------------------------|
| Material*                                                                                                                                                                                    | 1.4435 (type NEUMO)<br>1.4404 (type KK / KL)                                                                 |
| Norm                                                                                                                                                                                         | DIN32676 (actual version)                                                                                    |
| Lengths*                                                                                                                                                                                     | KK<br>NEUMO (L=28,6mm)<br>KL                                                                                 |
| Surface finish<br>(standard of stock)*                                                                                                                                                       | H3<br>HE3<br>H4<br>HE4                                                                                       |
| Connections*                                                                                                                                                                                 | welding ends and clamp connections in accordance with DIN32676 line A (DIN), line B (ISO), line C (ASME-BPE) |
| * Alternative material grades (such as 1.4539, 2.4602, 2.4605, etc.), different surface qualities and connections as well as customised components (adaptors etc.) are available on request. |                                                                                                              |





## Clamp Ferrules DIN32676, tube dimensions in accordance with DIN11866 line A

| DN  | d   | s   | D     | KK   | KL   | KN   |
|-----|-----|-----|-------|------|------|------|
| 6   | 8   | 1   | 25    | 12,7 | 28,6 | 28,6 |
| 8   | 10  | 1   | 25    | 12,7 | 28,6 | 28,6 |
| 10  | 13  | 1,5 | 34    | 18   | 28,6 | 28,6 |
| 15  | 19  | 1,5 | 34    | 18   | 28,6 | 28,6 |
| 20  | 23  | 1,5 | 34    | 18   | 28,6 | 28,6 |
| 25  | 29  | 1,5 | 50,5  | 21,5 | 36   | 28,6 |
| 32  | 35  | 1,5 | 50,5  | 21,5 | 36   | 28,6 |
| 40  | 41  | 1,5 | 50,5  | 21,5 | 36   | 28,6 |
| 50  | 53  | 1,5 | 64    | 21,5 | 36   | 28,6 |
| 65  | 70  | 2   | 91    | 28   | 48   | 28,6 |
| 80  | 85  | 2   | 106   | 28   | 48   | 28,6 |
| 100 | 104 | 2   | 119   | 28   | 48   | 28,6 |
| 125 | 129 | 2   | 155   | 28   | 66   | 28,6 |
| 150 | 154 | 2   | 183   | 28   | 66   | 28,6 |
| 200 | 204 | 2   | 233,5 | 28   | 66   | 28,6 |

## Clamp Ferrules DIN32676, tube dimensions in accordance with DIN11866 line B

| DN                  | d     | s   | D     | KK   | KL   | KN   |
|---------------------|-------|-----|-------|------|------|------|
| 6                   | 10,2  | 1,6 | 25    | 12,7 | 28,6 | 28,6 |
| 8                   | 13,5  | 1,6 | 25    | 12,7 | 28,6 | 28,6 |
| 10                  | 17,2  | 1,6 | 25    | 12,7 | 28,6 | 28,6 |
| 15 / special design | 21,3  | 1,6 | 34    | 21,5 | 36   | 28,6 |
| 15 / DIN32676       | 21,3  | 1,6 | 50,5  | 21,5 | 36   | 28,6 |
| 20                  | 26,9  | 1,6 | 50,5  | 21,5 | 36   | 28,6 |
| 25                  | 33,7  | 2   | 50,5  | 21,5 | 36   | 28,6 |
| 32 / special design | 42,4  | 2   | 50,5  | 21,5 | 36   | 28,6 |
| 32 / DIN32676       | 42,4  | 2   | 64    | 21,5 | 36   | 28,6 |
| 40                  | 48,3  | 2   | 64    | 21,5 | 36   | 28,6 |
| 50                  | 60,3  | 2   | 77,5  | 28   | 36   | 28,6 |
| 65                  | 76,1  | 2   | 91    | 28   | 48   | 28,6 |
| 80                  | 88,9  | 2,3 | 106   | 28   | 48   | 28,6 |
| 100                 | 114,3 | 2,3 | 130   | 28   | 48   | 28,6 |
| 125                 | 139,7 | 2,6 | 155   | 28   | 66   | 28,6 |
| 150                 | 168,3 | 2,6 | 183   | 28   | 66   | 28,6 |
| 200                 | 219,1 | 2,6 | 233,5 | 28   | 66   | 28,6 |

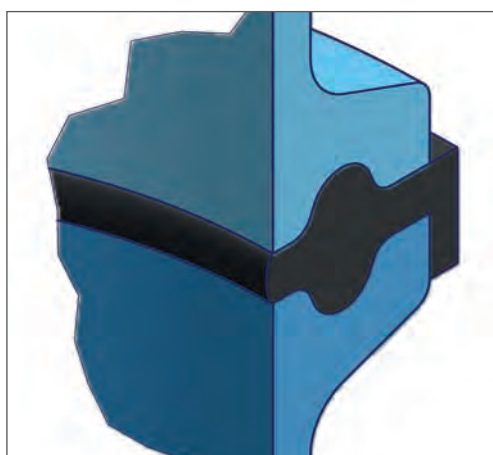
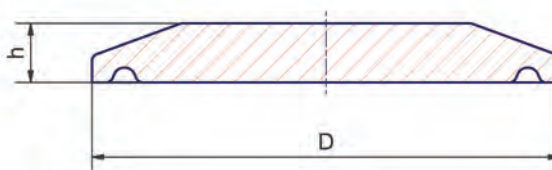
## Clamp Ferrules DIN32676, tube dimensions in accordance with DIN11866 line C

| DN     | d     | s    | D    | KK   | KL   | KN   |
|--------|-------|------|------|------|------|------|
| 1/4"   | 6,35  | 0,89 | 25   | 12,7 | 28,6 | 28,6 |
| 3/8"   | 9,53  | 0,89 | 25   | 12,7 | 28,6 | 28,6 |
| 1/2"   | 12,7  | 1,65 | 25   | 12,7 | 28,6 | 28,6 |
| 3/4"   | 19,05 | 1,65 | 25   | 12,7 | 28,6 | 28,6 |
| 1"     | 25,4  | 1,65 | 50,5 | 21,5 | 36   | 28,6 |
| 1 1/2" | 38,1  | 1,65 | 50,5 | 21,5 | 36   | 28,6 |
| 2"     | 50,8  | 1,65 | 64   | 21,5 | 36   | 28,6 |
| 2 1/2" | 63,5  | 1,65 | 77,5 | 28   | 36   | 28,6 |
| 3"     | 76,2  | 1,65 | 91   | 28   | 48   | 28,6 |
| 4"     | 101,6 | 2,11 | 119  | 28   | 48   | 28,6 |
| 6"     | 152,4 | 2,77 | 167  | 28   | 66   | 28,6 |



Blind Clamps

| Technical Data                                                                                                      |                                                 |
|---------------------------------------------------------------------------------------------------------------------|-------------------------------------------------|
| Material*                                                                                                           | 1.4435 / 1.4404                                 |
| Norm                                                                                                                | DIN32676 (actual version)                       |
| Surface finish<br>(standard of stock)*                                                                              | 1.4435: H4<br>1.4404: H3                        |
| Connection                                                                                                          | Clamp connection in<br>accordance with DIN32676 |
| * Alternative materials (such as 2.4602, 1.4539, etc.) and<br>different surface qualities are available on request. |                                                 |





## Blind Ferrules DIN32676, tube dimensions in accordance with DIN1866 line A

| DN  | D     | h    |
|-----|-------|------|
| 6   | 25    | 4,75 |
| 8   | 25    | 4,75 |
| 10  | 34    | 6,35 |
| 15  | 34    | 6,35 |
| 20  | 34    | 6,35 |
| 25  | 50,5  | 6,35 |
| 32  | 50,5  | 6,35 |
| 40  | 50,5  | 6,35 |
| 50  | 64    | 6,35 |
| 65  | 91    | 6,35 |
| 80  | 106   | 6,35 |
| 100 | 119   | 8    |
| 125 | 155   | 8    |
| 150 | 183   | 14   |
| 200 | 233,5 | 14   |

## Blind Ferrules DIN32676, tube dimensions in accordance with DIN1866 line B

| DN                  | D     | h    |
|---------------------|-------|------|
| 6                   | 25    | 4,75 |
| 8                   | 25    | 4,75 |
| 10                  | 25    | 4,75 |
| 15 / special design | 34    | 6,35 |
| 15 / DIN32676       | 50,5  | 6,35 |
| 20                  | 50,5  | 6,35 |
| 25                  | 50,5  | 6,35 |
| 32 / special design | 50,5  | 6,35 |
| 32 / DIN32676       | 64    | 6,35 |
| 40                  | 64    | 6,35 |
| 50                  | 77,5  | 6,35 |
| 65                  | 91    | 6,35 |
| 80                  | 106   | 6,35 |
| 100                 | 130   | 8    |
| 125                 | 155   | 8    |
| 150                 | 183   | 14   |
| 200                 | 233,5 | 14   |

## Blind Ferrules DIN32676, tube dimensions in accordance with DIN1866 line C

| DN     | D    | h    |
|--------|------|------|
| 1/4"   | 25   | 4,75 |
| 3/8"   | 25   | 4,75 |
| 1/2"   | 25   | 4,75 |
| 3/4"   | 25   | 4,75 |
| 1"     | 50,5 | 6,35 |
| 1 1/2" | 50,5 | 6,35 |
| 2"     | 64   | 6,35 |
| 2 1/2" | 77,5 | 6,35 |
| 3"     | 91   | 6,35 |
| 4"     | 119  | 8    |
| 6"     | 167  | 14   |

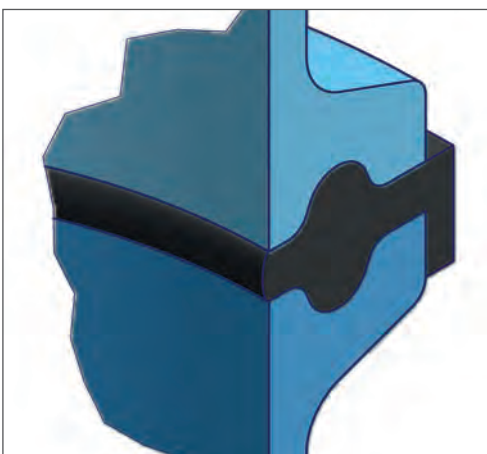
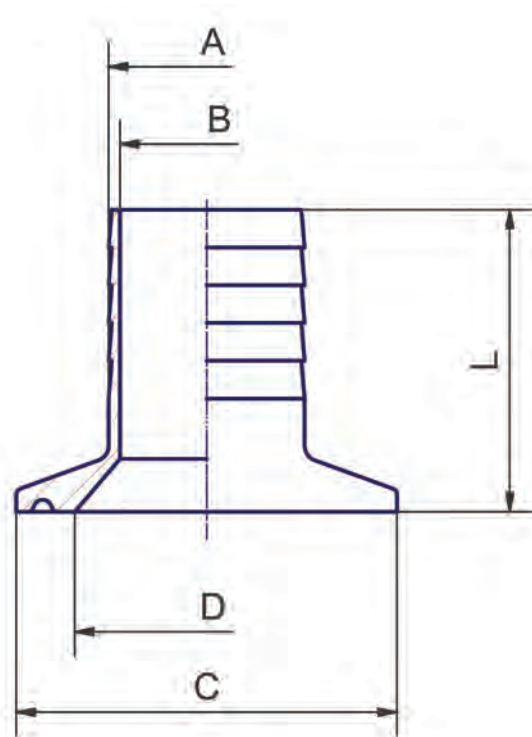




Hose Tail

Hose Tail

| Technical Data                                                                                                                                                                         |                                                                                            |
|----------------------------------------------------------------------------------------------------------------------------------------------------------------------------------------|--------------------------------------------------------------------------------------------|
| Material*                                                                                                                                                                              | 316L / 1.4404                                                                              |
| Surface quality (standard of stock)*                                                                                                                                                   | Ra<0,8µm precision turned                                                                  |
| Connections*                                                                                                                                                                           | Clamp connection in accordance with DIN32676 line A (DIN), line B (ISO), line C (ASME-BPE) |
| * Alternative materials (such as 1.4435, 1.4539, 2.4602, 2.4605, AL-6XN®, etc.), different surface qualities and connections as well as customised components are available on request |                                                                                            |




**Hose Tails - connection in accordance with DIN32676 line A**

| Clamp Connection | Hose | A    | B   | C  | D  | L  |
|------------------|------|------|-----|----|----|----|
| DN 10            | 1/4" | 6,4  | 3,4 | 34 | 10 | 40 |
|                  | 3/8" | 9,5  | 6,5 | 34 | 10 | 40 |
|                  | 1/2" | 12,7 | 9,7 | 34 | 10 | 40 |
|                  | 3/4" | 19   | 16  | 34 | 10 | 40 |
| DN 15            | 1/4" | 6,4  | 3,4 | 34 | 16 | 40 |
|                  | 3/8" | 9,5  | 6,5 | 34 | 16 | 40 |
|                  | 1/2" | 12,7 | 9,7 | 34 | 16 | 40 |
|                  | 3/4" | 19   | 16  | 34 | 16 | 40 |
| DN 20            | 1/4" | 6,4  | 3,4 | 34 | 20 | 40 |
|                  | 3/8" | 9,5  | 6,5 | 34 | 20 | 40 |
|                  | 1/2" | 12,7 | 9,7 | 34 | 20 | 40 |
|                  | 3/4" | 19   | 16  | 34 | 20 | 0  |

**Hose Tails - connection in accordance with DIN32676 line C / ASME-BPE**

| Clamp Connection | Hose    | A    | B   | C    | D  | L  |
|------------------|---------|------|-----|------|----|----|
| 1/2"             | 1/4"    | 6,4  | 3,4 | 25   | 10 | 32 |
|                  | 8 x 5   | 8    | 5   | 25   | 10 | 32 |
|                  | 3/8"    | 9,5  | 6,5 | 25   | 10 | 32 |
|                  | 1/2"    | 12,7 | 9,7 | 25   | 10 | 32 |
|                  | 14 x 11 | 14   | 11  | 25   | 10 | 40 |
|                  | 16 x 13 | 16   | 13  | 25   | 10 | 40 |
|                  | 3/4"    | 19   | 16  | 25   | 10 | 32 |
| 3/4"             | 1/4"    | 6,4  | 3,4 | 25   | 10 | 32 |
|                  | 8 x 5   | 8    | 5   | 25   | 10 | 32 |
|                  | 3/8"    | 9,5  | 6,5 | 25   | 10 | 32 |
|                  | 1/2"    | 12,7 | 9,7 | 25   | 10 | 32 |
|                  | 14 x 11 | 14   | 11  | 25   | 10 | 40 |
|                  | 16 x 13 | 16   | 13  | 25   | 10 | 40 |
|                  | 3/4"    | 19   | 16  | 25   | 10 | 32 |
| 1"               | 1/4"    | 6,4  | 3,4 | 50,5 | 23 | 40 |
|                  | 8 x 5   | 8    | 5   | 50,5 | 23 | 40 |
|                  | 3/8"    | 9,5  | 6,5 | 50,5 | 23 | 40 |
|                  | 1/2"    | 12,7 | 9,7 | 50,5 | 23 | 40 |
|                  | 14 x 11 | 14   | 11  | 50,5 | 23 | 40 |
|                  | 16 x 13 | 16   | 13  | 50,5 | 23 | 40 |
|                  | 3/4"    | 19   | 16  | 50,5 | 23 | 40 |
|                  | 22 x 19 | 22   | 19  | 50,5 | 23 | 40 |
| 1 1/2"           | 1"      | 26   | 23  | 50,5 | 23 | 40 |
|                  | 1/4"    | 6,4  | 3,4 | 50,5 | 35 | 40 |
|                  | 8 x 5   | 8    | 5   | 50,5 | 35 | 40 |
|                  | 3/8"    | 9,5  | 6,5 | 50,5 | 35 | 40 |
|                  | 1/2"    | 12,7 | 9,7 | 50,5 | 35 | 40 |
|                  | 14 x 11 | 14   | 11  | 50,5 | 35 | 40 |
|                  | 16 x 13 | 16   | 13  | 50,5 | 35 | 40 |
|                  | 3/4"    | 19   | 16  | 50,5 | 35 | 40 |
|                  | 22 x 19 | 22   | 19  | 50,5 | 35 | 40 |
|                  | 1"      | 26   | 23  | 50,5 | 35 | 40 |
| 2"               | 1 1/2"  | 38,1 | 35  | 50,5 | 35 | 40 |
|                  | 1/2"    | 12,7 | 9,7 | 64   | 48 | 60 |
|                  | 3/4"    | 19   | 16  | 64   | 48 | 60 |
|                  | 1"      | 26   | 23  | 64   | 48 | 60 |
|                  | 1 1/2"  | 38,1 | 35  | 64   | 48 | 60 |
|                  | 2"      | 50,8 | 47  | 64   | 48 | 60 |

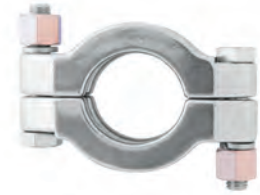
Connection in accordance with DIN32676 line B (ISO) available on request.



Type S



Type SH



Type SSH



Type 3-parts



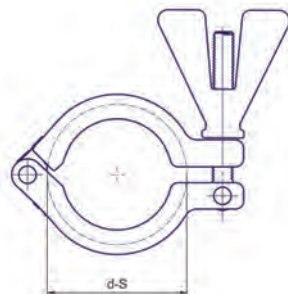
Type SAF

## Technical Data

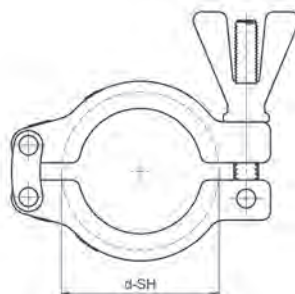
|           |              |                              |
|-----------|--------------|------------------------------|
| Material* | Type S       | 304 / 1.4301                 |
|           | Type SH      | 316 / 1.4401                 |
|           | Type SAF     | 316 / 1.4401                 |
|           | Type SSH     | 304 / 1.4301<br>(brazen nut) |
|           | Type 3-parts | 304 / 1.4301                 |

\* Different designs and clamp diameters as well as different nuts are available on request.

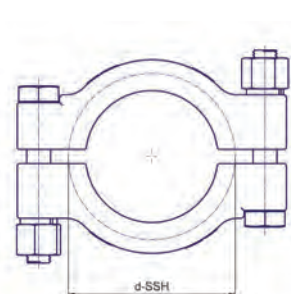
Type S



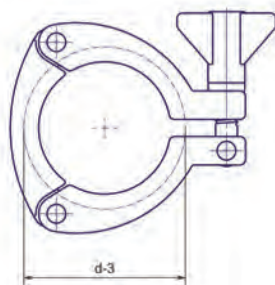
Type SH



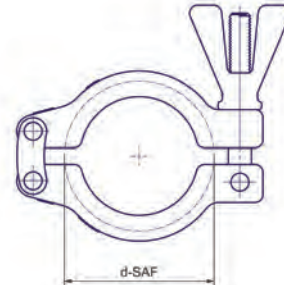
Type SSH



Type 3-parts



Type SAF





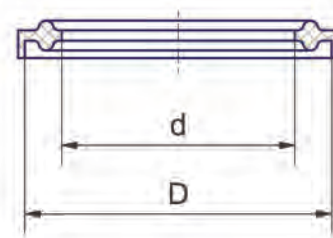
| Clamps, Type S, SH, SAF, SSH and 3-parts |      |      |       |       |      |
|------------------------------------------|------|------|-------|-------|------|
| DN                                       | d-S  | d-SH | d-SAF | d-SSH | d-3  |
| 1/2" - 3/4"                              | 25   | 25   | 25    | 25    | -    |
| 10 / 15 / 20                             | 34   | 34   | 34    | 25    | -    |
| 1" - 1 1/2"                              | 50,5 | 50,5 | 50,5  | 50,5  | 50,5 |
| 2                                        | 64   | 64   | 64    | 64    | 64   |
| 2 1/2"                                   | 77,5 | 77,5 | 77,5  | 77,5  | 77,5 |
| 3"                                       | 91   | 91   | 91    | 91    | 91   |
| 3 1/2"                                   | 106  | 106  | 106   | 106   | -    |
| 4"                                       | 119  | 119  | 119   | 119   | 119  |
| 4 1/2"                                   | 130  | 130  | -     | 130   | -    |
| 5"                                       | -    | 144  | -     | -     | -    |
| 5 1/2"                                   | -    | 155  | -     | -     | -    |
| 6"                                       | 167  | 167  | -     | 167   | -    |
| 6 5/8"                                   | -    | 183  | -     | 183   | -    |
| 8"                                       | -    | 217  | -     | -     | -    |
| 8 5/8"                                   | -    | 233  | -     | 233   | -    |



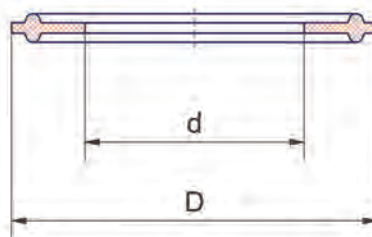
| Technical Data                    |                          |
|-----------------------------------|--------------------------|
| Materials*<br>(standard of stock) | EPDM                     |
|                                   | Silicone (VMQ)           |
|                                   | Perbunan (NBR)           |
|                                   | Viton (FKM)              |
|                                   | Viton / FEP-encapsulated |
| Norm                              | Teflon (PTFE)            |
|                                   | DIN32676                 |
| Approval                          | ASME-BPE                 |
|                                   | FDA + USP Class VI       |

\* Alternative materials (such as EPDM / FEP-encapsulated, Gylon®, etc.), different dimensions as well as customised gaskets are available on request.

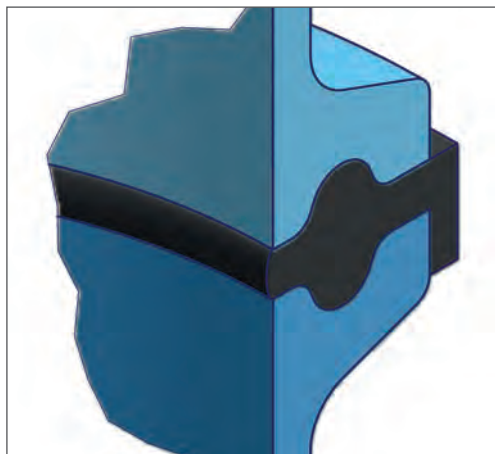
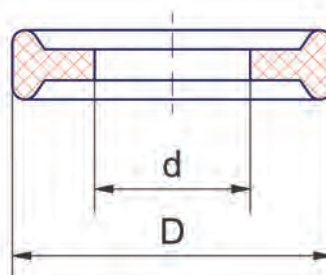
Clamp Gaskets DIN32676  
line A from DN10  
line B from DN15



Clamp Gaskets  
ASME-BPE / DIN32676 line C  
1" - 6"



Clamp Gaskets  
ASME-BPE 1/4" - 3/4"  
DIN32676 line A DN6-DN8  
DIN32676 line B DN6-DN10





## Clamp Gasket DIN32676, line A

| DN  | d   | D     |
|-----|-----|-------|
| 6   | 6   | 22    |
| 8   | 8   | 22    |
| 10  | 10  | 34    |
| 15  | 16  | 34    |
| 20  | 20  | 34    |
| 25  | 26  | 50,5  |
| 32  | 32  | 50,5  |
| 40  | 38  | 50,5  |
| 50  | 50  | 64    |
| 65  | 66  | 91    |
| 80  | 81  | 106   |
| 100 | 100 | 119   |
| 125 | 125 | 155   |
| 150 | 150 | 183   |
| 200 | 200 | 233,5 |

## Clamp Gasket DIN32676, line B

| DN                  | d     | D     |
|---------------------|-------|-------|
| 6                   | 7     | 22    |
| 8                   | 10,3  | 22    |
| 10                  | 14    | 22    |
| 15 / special design | 18,1  | 34    |
| 15 / DIN32676       | 18,1  | 50,5  |
| 20                  | 23,7  | 50,5  |
| 25                  | 29,7  | 50,5  |
| 32 / special design | 38,4  | 50,5  |
| 32 / DIN32676       | 38,4  | 64    |
| 40                  | 44,3  | 64    |
| 50                  | 56,3  | 77,5  |
| 65                  | 72,1  | 91    |
| 80                  | 84,3  | 106   |
| 100                 | 109,7 | 130   |
| 125                 | 134,5 | 155   |
| 150                 | 163,1 | 183   |
| 200                 | 213,9 | 233,5 |

## Clamp Gasket ASME-BPE and DIN32676 line C

| DN     | d      | D    |
|--------|--------|------|
| 1/4"   | 4,57   | 22   |
| 3/8"   | 7,75   | 22   |
| 1/2"   | 9,4    | 22   |
| 3/4"   | 15,75  | 22   |
| 1"     | 22,1   | 50,5 |
| 1 1/2" | 34,8   | 50,5 |
| 2"     | 47,5   | 63,5 |
| 2 1/2" | 60,2   | 77,5 |
| 3"     | 72,9   | 91   |
| 4"     | 97,38  | 119  |
| 6"     | 146,86 | 167  |





| EN     | Type                          | C<br>% | Cr<br>%   | Ni<br>%         | Mo<br>%   | Si<br>% | Mn<br>% | S<br>% | P<br>% | other                                 | Comparable material<br>AISI | Comparable material<br>SS |
|--------|-------------------------------|--------|-----------|-----------------|-----------|---------|---------|--------|--------|---------------------------------------|-----------------------------|---------------------------|
| 1.4301 | austenite                     | 0,07   | 17,5-19,5 | 8,0-10,5        | -         | 1,0     | 2,0     | 0,015  | 0,045  | N ≤ 0,11                              | 304                         | 2333                      |
| 1.4306 |                               | 0,03   | 18,0-20,0 | 10,0-12,0       | -         | 1,0     | 2,0     | 0,015  | 0,045  | N ≤ 0,11                              | 304L                        | 2352                      |
| 1.4307 |                               | 0,03   | 17,5-19,5 | 8,0-10,5        | -         | 1,0     | 2,0     | 0,015  | 0,045  | N ≤ 0,11                              | 304L                        | -                         |
| 1.4541 |                               | 0,08   | 17,0-19,0 | 9,0-12,0        | -         | 1,0     | 2,0     | 0,015  | 0,045  | Ti (5xC)-0,70                         | 321                         | 2337                      |
| 1.4401 | austenite<br>(acid-resistant) | 0,07   | 16,5-18,5 | 10,0-13,0       | 2,0-2,5   | 1,0     | 2,0     | 0,015  | 0,045  | N ≤ 0,11                              | 316                         | 2347                      |
| 1.4404 |                               | 0,03   | 16,5-18,5 | 10,0-13,0       | 2,0-2,5   | 1,0     | 2,0     | 0,015  | 0,045  | N ≤ 0,11                              | 316L                        | 2348                      |
| 1.4432 |                               | 0,03   | 16,5-18,5 | 10,5-13,0       | 2,5-3,0   | 1,0     | 2,0     | 0,015  | 0,045  | N ≤ 0,11                              | 316L                        | 2353                      |
| 1.4435 |                               | 0,03   | 17,0-19,0 | 12,5-15,0       | 2,5-3,0   | 1,0     | 2,0     | 0,015  | 0,045  | N ≤ 0,11                              | 316L                        | 2353                      |
| 1.4539 |                               | 0,02   | 19,0-21,0 | 24,0-26,0       | 4,0-5,0   | 0,7     | 2,0     | 0,015  | 0,030  | N ≤ 0,15; Cu 1,20-2,00                | 904L                        | 2562                      |
| 1.4571 |                               | 0,08   | 16,5-18,5 | 10,5-13,5       | 2,0-2,5   | 1,0     | 2,0     | 0,015  | 0,045  | Ti (5xC)-0,70                         | 316Ti                       | 2350                      |
| 1.4529 | Super-austenite<br>(6-Moly)   | 0,02   | 20,0-21,0 | 24,5-25,5       | 6,0-6,8   | 0,5     | 1,0     | 0,005  | 0,030  | N 0,18-0,2%, Cu 0,8-1,0%              | AL-6XN®                     | -                         |
| 1.4547 |                               | 0,02   | 19,5-20,5 | 17,5-18,5       | 6,0-7,0   | 0,7     | 1,0     | 0,010  | 0,030  | N 0,18-0,25%, Cu 0,5-1,0%             | UNS S 31254                 | 254 SMO                   |
| 1.4462 | Duplex                        | 0,03   | 21,0-23,0 | 4,5-6,5         | 2,5-3,5   | 1,0     | 2,0     | 0,015  | 0,035  | N 0,10-0,22                           | UNS S 31803                 | 2377                      |
| 1.4501 | Super-duplex                  | 0,03   | 24,0-26,0 | 6,0-8,0         | 3,0-4,0   | 1,0     | 1,0     | 0,015  | 0,035  | N 0,20-0,30%, Cu 0,5-1,0%, W 2,5-3,5% | UNS S 32760                 | -                         |
| 1.4410 |                               | 0,03   | 24,0-26,0 | 6,0-8,0         | 3,5-5,0   | 1,0     | 1,0     | 0,015  | 0,035  | N 0,24-0,32%                          | UNS S 32750                 | -                         |
| 2.4602 | nickel<br>-base alloy         | 0,01   | 20,0-22,5 | Rest ( ca. 60%) | 12,5-14,5 | 0,08    | 0,5     | 0,010  | 0,025  | Fe 2-6%, W 2,5-3,5%, Co ≤ 2,5%        | Hastelloy C-22              | -                         |
| 2.4605 |                               | 0,01   | 22,0-24,0 | Rest ( ca. 60%) | 15,0-16,0 | 0,1     | 0,5     | 0,015  | 0,025  | Fe ≤ 1,5%, Cu ≤ 0,5%, Co ≤ 0,3%       | Alloy 59                    | -                         |
| 2.4610 |                               | 0,009  | 14,5-17,5 | Rest ( ca. 65%) | 14,0-17,0 | 0,05    | 1,0     | 0,010  | 0,020  | Fe ≤ 3,0%, Ti ≤ 0,7%, Co ≤ 2,0%       | Hastelloy C4                | -                         |
| 2.4819 |                               | 0,01   | 14,5-16,5 | Rest ( ca. 58%) | 15,0-17,0 | 0,08    | 1,0     | 0,010  | 0,025  | Fe 4-7%, W 3,0-4,5%, Co ≤ 2,5%        | Hastelloy C-276             | -                         |

All information supplied without warranty





# High-performance Materials and Custom Design



Over many years NEUMO has increasingly specialised in special materials and special design. Today we dominate the market as a competent reference and warehouse keeper for special alloys. Furthermore we are a supplier of high quality special design.

The product range includes the production of components fabricated to drawing as well as tubes and standardised fittings (for example DIN11865 and ASME-BPE) in special alloys.

In addition, we offer our patented products BioConnect®, ConnectS®, BioControl® and BioFlow check valves in special materials.

Our offered product portfolio is rounded off by our range of semi-finished products, such as sheets, bar steel and cuttings in standard or special materials.



Distribution Pipes



Customised Construction



Customised Connections

Customised Fittings

Reducer Elbows

... designed and manufactured with support of your specialist engineers!

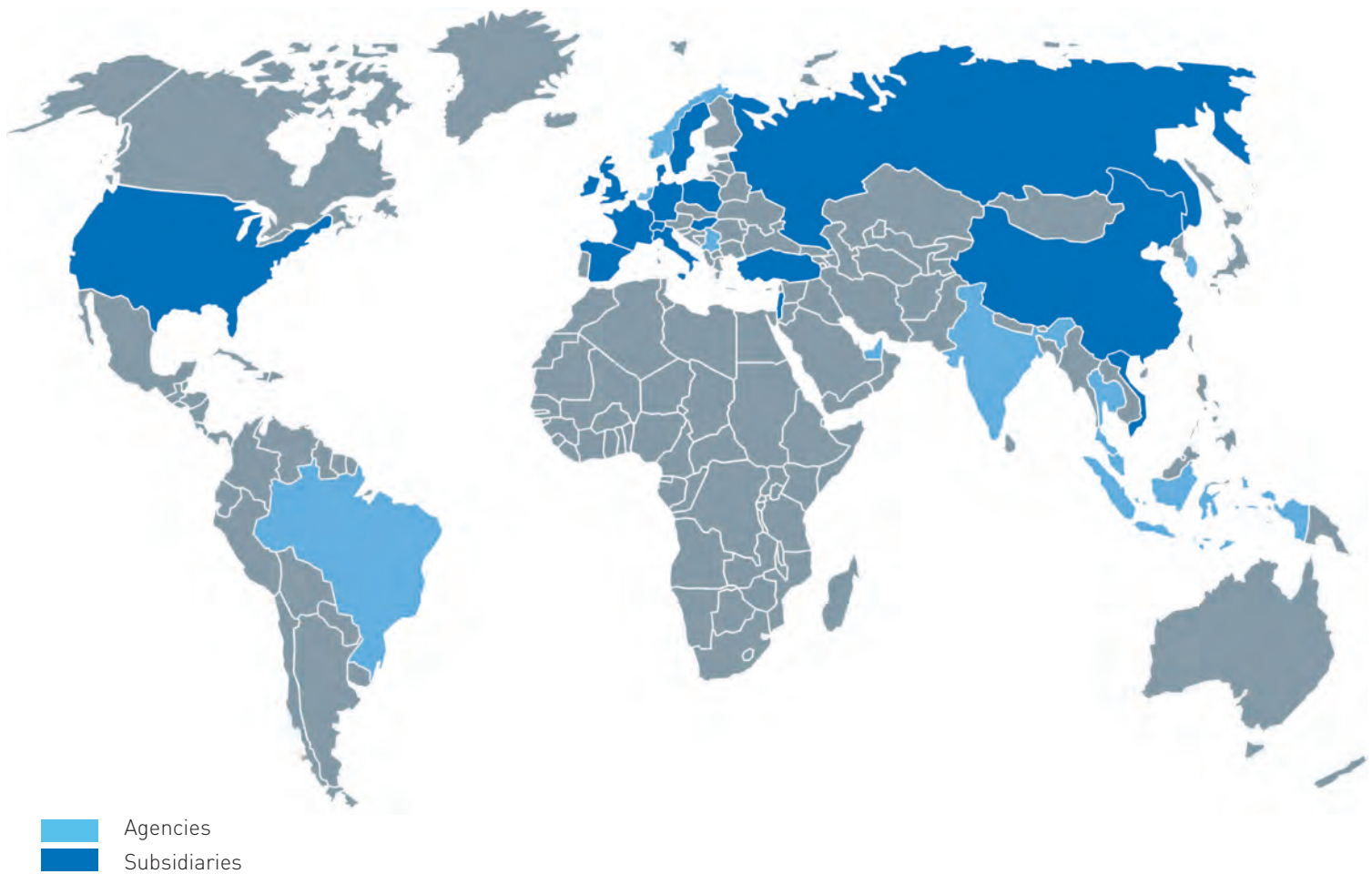


- 1.4539/904L
- AL-6XN®
- 2.4602/C-22
- 2.4605/Alloy 59
- 2.4610/C-4
- 2.4819/C-276
- 1.4462
- Titanium
- ...

- Tubes
- Fittings (standard + custom)
- Tube Connections (standard + custom)
- Customised Machined Items
- Prefabricated Spools
- Distribution Pipes
- Customised Constructions
- Process Equipment
- Bar Steel
- Sheets
- Cuttings
- and many more ...



## NEUMO worldwide



The **NEUMO Ehrenberg Group** is a privately owned and managed multi-national corporate group with more than 1.900 employees.

Founded in 1947, NEUMO, the group's parent company, now produces, manufactures and supplies fittings, equipment and tubes made from stainless steel as well as corrosion-resistant special alloys for the pharmaceutical, biotechnology, chemical and semicon industries.

NEUMO products provide a significant contribution to safety and integrity of production processes.

### **NEUMO GmbH + Co. KG**

Henry-Ehrenberg-Platz  
D-75438 Knittlingen  
Telefon: +49 7043 36-0  
Telefax: +49 7043 36-130  
E-Mail: [info@neumo.de](mailto:info@neumo.de)  
[www.neumo.de](http://www.neumo.de)